



Historic Downtown Janesville A Walking Tour

Text and Photographs by Carol Lohry Cartwright.

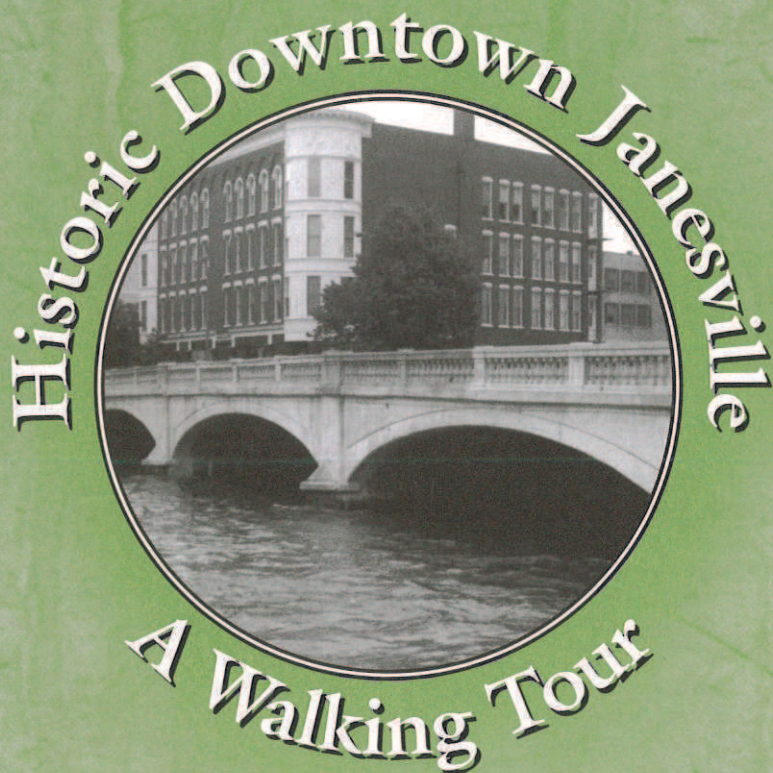
Prepared for the Janesville Historic Commission, City of Janesville, Wisconsin.

Published in 2000.

Editorial assistance for this publication was provided by Judith Adler, Community Development Planner for the City of Janesville. Lay-out assistance provided by Monica Gilmore, Terry Printing, Janesville, Wisconsin.

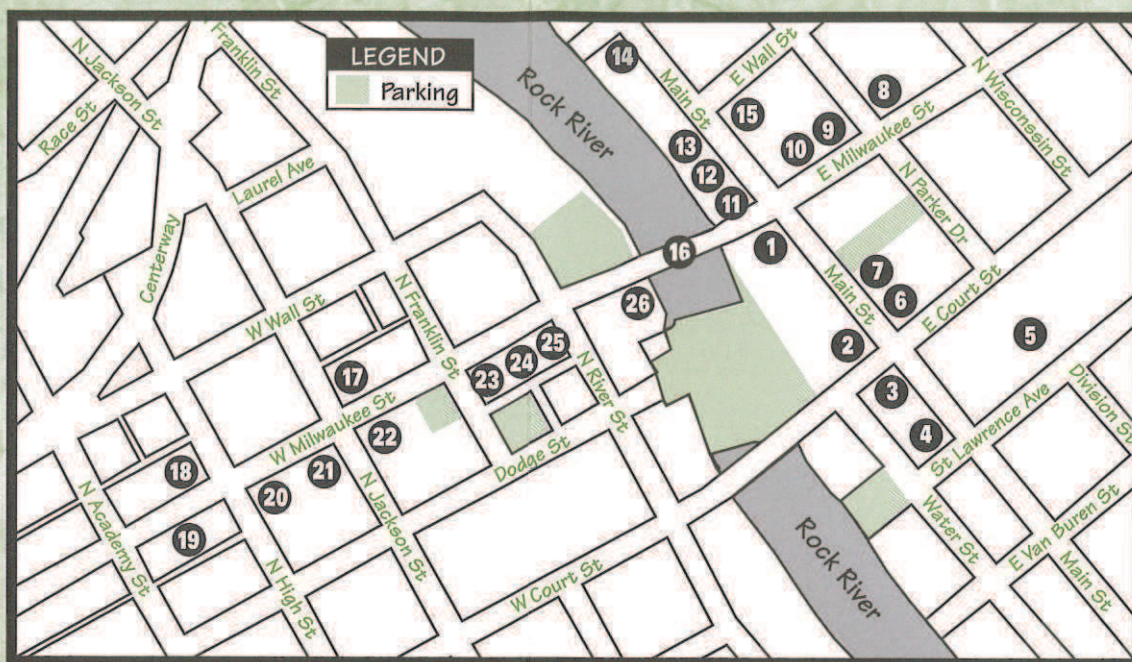
For further information on historic preservation programs in the City of Janesville, please contact the Janesville Historic Commission, 18 N. Jackson Street, Janesville, WI 53545; 608-755-3085 or 755-3065.

The activity that is the subject of this publication has been financed in part with Federal funds from the National Park Service, U. S. Department of the Interior, and administered by the State Historical Society of Wisconsin. However, the contents and opinions do not necessarily reflect the views or policies of the Department of the Interior or the State Historical Society of Wisconsin. Nor does the mention of trade names or commercial products constitute endorsement or recommendation by the Department of the Interior or the State Historical Society of Wisconsin. This program receives federal financial assistance for identification and protection of historic properties. Under Title VI of the Civil Rights Act of 1964, Section 504 of the Rehabilitation Act of 1973, and the Age Discrimination Act of 1975, as amended, the U. S. Department of the Interior prohibits discrimination on the basis of race, color, national origin, or disability or age in its federally assisted programs. If you believe you have been discriminated against in any program, activity, or facility as described above, or if you desire further information, please write to: Office of Equal Opportunity, National Park Service, 1849 C Street NW, Washington, DC 20240.



Historic Downtown Janesville

Begin your tour...



To begin your tour, start at the intersection of Main and Milwaukee Streets on the east side of the Rock River. Follow the numbers, beginning with 1 (2 S. Main St.) and proceed down South Main Street to view 2-4, then back up South Main to view 5-7. To view 8-10, turn right on East Milwaukee Street. Then go north on North Main Street, where you can view 11-15. Cross the river to West Milwaukee Street and view 17-18 on the north side of the street. On the south side of West Milwaukee Street, view 19-26. Cross the river again to return to your original location.

Parking in downtown Janesville near the beginning of this walking tour can be found at the locations marked on the map.

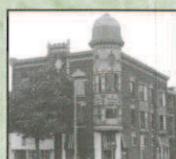


1 2 S. Main St.
Lappin-Hayes Block
The Italianate style Lappin-Hayes Block is the only extant example of the multi-story brick buildings that once dominated downtown Janesville. Originally built in 1855 and extensively remodeled in 1889, it was restored in the 1980s. The third-story openings feature round arches under round-arched reveals in an "arcaded" effect. Also of note is the elaborately embossed pressed metal covering of the corner tower.



2 38 S. Main St.
Court Street Methodist Church
The Court Street Methodist Church is unusual because it

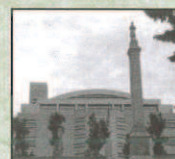
was built as a church on the upper levels with commercial space on the first floor. Completed in 1868, the building is an example of the Second Empire architectural style with its distinctive mansard roof. The building has also been used as a Masonic Temple and as a long-time location of the J. C. Penny Department Store.



3 52 S. Main St.
Kent Block
The Kent Block is the city's best example of the Queen Anne commercial style. The style's exuberance is seen in the pressed metal-clad bays and the corner tower, and in the stone accents on the building's parapet and above the second-story openings. A matching apartment building, known as the Kent Flats, sits along Court Street. The Kent Block was built at the height of the Queen Anne style's popularity, 1895, by local builders Oscar Nowland and John W. Peters.



4 64 S. Main St.
Janesville Public Library
The Janesville Public Library was built with money from the Andrew Carnegie Foundation and with a grant from a local family for the children's library. Built in 1902 in the Classical Revival architectural style, the ideals of the free public library movement in the early twentieth century, "Free to the People," were engraved on a stone plaque.



5 51 S. Main St.
Rock County Courthouse
Surrounded by the Courthouse Hill Historic District, the Rock County Courthouse has been an important part of the city's downtown since its earliest days. The present building is the third courthouse, greatly enlarged and remodeled. It was built in 1955 in the International Style, and between 1996 and 1999, a large addition was made to the west side of the building. In front of the courthouse is the Civil War Memorial, erected in 1901.



6 33-39 S. Main St.
Fredendall Block
The Fredendall Block was built in 1868-1869. Constructed of cream brick, the building has Italianate details, including brick window hoods and an elaborate brick corbeled cornice. Classically-detailed cast iron columns accent the storefronts. The Fredendall Block is a fine example of historic preservation and restoration in downtown Janesville.



7 29-31 S. Main St.
Helms-McVicar Block
The Helms-McVicar Block was built in 1905 in the Queen Anne commercial style and it is typical of the early twentieth century commercial style in Wisconsin. The two-story bays and classical cornice are the building's most impressive details. The

storefronts have existing period details that give them an attractive historic appearance.



8 201 E. Milwaukee St.
Hodge and Buchholz Carriage Factory
During the nineteenth century, many small

and medium-sized industrial shops, including the Hodge and Buchholz Carriage Factory, co-existed with commercial buildings in downtown Janesville. The company, which manufactured all types of horse-drawn carriages, built the front section in 1880 and the rear section in 1900. In 1919, the company ended carriage production.



9 121 E. Milwaukee St.
London Hotel
The London Hotel building is a fine example of Queen

Anne style commercial architecture. Built in 1893, the building features red brick walls, rusticated limestone trim, a two-story bay, and a corner tower, details that reflect the exuberant Queen Anne style. The building is typical of small hotels in many downtowns.



10 113-115 E. Milwaukee St.
Peters Block
The Peters Block received its current appearance in 1913,

but the structure of the building dates back to 1849 and 1855. The 1913 remodeling gave the building an early twentieth century appearance with modern geometric motifs derived from the popular Craftsman and Prairie styles of architecture.



11 11 N. Main St.
Otto F. Meyer Building
The Meyer Building is one of Janesville's fine mid-nineteenth century

small commercial blocks. Built between 1865 and 1870, it features Italianate style details, including round-arched windows accented with four layers of round brick arches and large keystones. Otto Meyer was a grocer who also sold wine, liquor, crockery, and glassware.



12 15 N. Main St.
Alan Bates Building
Alan Bates was a prominent Janesville attorney, real estate developer, and

politician. He built this red-brick Italianate style building in 1865, with his law office on the second floor. The building's second story openings are decorated with round brick arches, limestone corbels, and keystones with an unusual rope molding. The storefront cast-iron columns were made at the Rock River Iron Works in Janesville.



13 17 N. Main St.
Pre-Civil War Building
Most of the mid-nineteenth century commercial buildings in

Janesville reflect the Italianate architectural style. This diminutive building reflects the earlier Greek Revival commercial style. The rectangular openings and simple facade is a marked contrast to the round and segmental arches of its Italianate neighbors.



14 119-123 N. Main St.
Peter Myers Buildings
The Peter Myers Buildings are the only extant commercial

structures related to one of Janesville's most important nineteenth century entrepreneurs. Myers also built four large commercial blocks in downtown Janesville, which have all been lost. The north building was constructed in 1851, and the south building added a few years later. Myers operated a pork packing plant in the buildings, one of Myers many business interests in the city.



15 18-24 N. Main St.
IOOF Block
The IOOF Block is a large and elegant Italianate building constructed between

1866 and 1868. Built for three different owners, the building's facade has a unified appearance. Details include round-arched openings, decorative brickwork, and a pressed metal cornice. Iron columns support the storefronts. The upper floors of the building were used for Janesville's Odd Fellows Lodge and the IOOF inscription is still extant in one of the upper window openings.



16 Milwaukee Street Bridge
The Milwaukee Street Bridge was the main connection between the east and west sides of

Janesville's downtown. During the nineteenth century, commercial buildings sat on the old bridge, but were eventually destroyed by fire. The current bridge, built in the mid-twentieth century, has a balustrade of classical columns, a detail popular during this time.



17 216-222 W. Milwaukee St.
Four 1870s Buildings
This building group is a fine example of commercial

construction from the 1870s. The buildings were constructed between 1875 and 1879 in the Commercial Vernacular architectural style. Common features include cream brick walls, arched window openings and simple brick corbeling. These details suggest the

Italianate style, but none of the buildings are elaborate, hence the use of the term, Commercial Vernacular.



18 402 W. Milwaukee St.
First YMCA
This building was the first YMCA facility in Janesville. It was

originally constructed as a large Romanesque Revival commercial-style block in 1893. The corner tower is missing its roof, but the massiveness of this detail reflects the style. The rusticated limestone accenting dark red brick walls, along with the massive round arches are other elements of the style. In the 1920s, a new YMCA was built on South Franklin Street.



19 415-417 W. Milwaukee St.
Klein Block
The Klein Block was built in 1906-07 in the Queen Anne

commercial style. The first floor storefront is one of the few historic storefronts in the downtown, with intact show windows and transoms. Look for the small lion heads on the second story, a surprising detail of this building.



20 327 W. Milwaukee St.
Monterey Hotel
The Monterey Hotel is one of the city's architectural gems.

Built in 1930, the building is a fine example of the Art Deco style. The corner tower and raised parapets give the building a vertical emphasis important to the style. The stylized motifs of the terra cotta decoration give the building its high style. The last grand hotel building constructed in Janesville, the Monterey is typical of hotel construction during the 1920s and early 1930s.



21 301 W. Milwaukee St.
Thomas Mackin Block
The Mackin Block (1885) is a heavily accented commercial

building that reflects the later Italianate style. The heavy brick moldings over the upper windows and the elaborate cornice are details of later, classically-influenced Italianate commercial buildings. A carrara glass transom accents the storefront. Carrara glass was popular for early twentieth century storefronts.



22 221-223 W. Milwaukee St.
Cannon Block
The Cannon Block is one of the large two-story commercial

buildings along West Milwaukee Street. Originally built in 1878-1879, the building

was probably embellished with the classically-detailed bay windows and cornice around 1900. The "plus" motif shown at the cornice was popular in the nineteenth century.



23 113-123 W. Milwaukee St.
Richardson, David-Dunn, Richardson-Macloon Blocks
These large, almost

identical, Italianate style commercial blocks were constructed in 1869, and together, they make up one of the most impressive building groups in Janesville. The cream brick walls have raised arched parapets, bold classical cornices, and tall, narrow, arched openings.



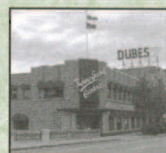
24 105-109 W. Milwaukee St.
Yahn and Williams Blocks
The Yahn and Williams Blocks, built in 1903

and 1890, respectively, reflect the many commercial buildings constructed during this time that have both Queen Anne and Classical Revival style details. The building's bays and multi-textured exteriors are Queen Anne details, but the classical cornices and trim reflect the growing influence of this style. The domed bays of the Williams Block are especially noteworthy.



25 101-103 W. Milwaukee St.
Kresge Building
The Kresge Building was constructed around 1930 for a popular

downtown business, the chain discount store, also known as the "Five and Dime" or "Dime" store. The building is simple, with modern geometric cornice decoration and a streamlined exterior. It is a good example of how some buildings at this time were changing to the modern, less decorative commercial structures of the post-World War II era.



26 15 W. Milwaukee St.
Woolworth Building
The old Woolworth Building was constructed around

1946 and is an example of the modern commercial architecture that flourished during the 1940s and 1950s. The building has a "streamlined" appearance that is accented by a raised corner parapet and vertical panels over second story windows. Most of the original glass storefront has been enclosed, but the pastel-colored tile transom is still visible. Woolworth's was the leading "Dime" store chain for much of the twentieth century.

Historic Downtown Janesville

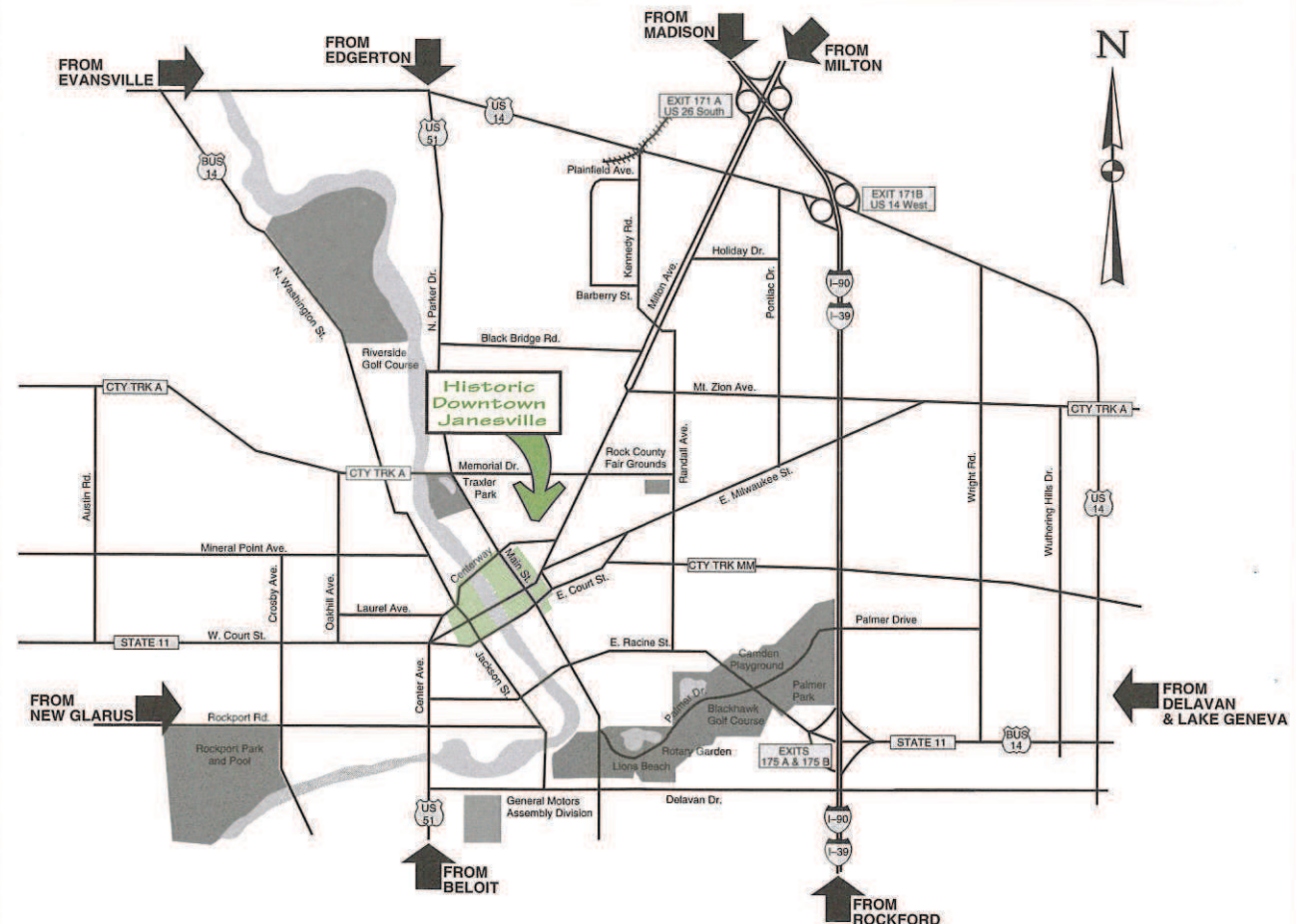
There are four historic districts located in downtown Janesville. On the east side of the Rock River are three districts, the North and South Main Street Historic Districts and the East Milwaukee Street Historic District. On the west side of the river is the West Milwaukee Street Historic District. These districts contain the best examples of historic commercial architecture in the city and represent the city's commercial development from the 1850s to the 1930s.



North Main Street Historical District



South Main Street Historical District



East Milwaukee Street Historical District



West Milwaukee Street Historical District



REMINDER:

While visiting Janesville, see our other historic districts.
For information contact:

Janesville Area Convention & Visitors Bureau, 20 S Main Street
City of Janesville, Housing & Neighborhood Services, 200 W. Milwaukee Street;
or the Lincoln-Tallman Restorations, 440 N. Jackson Street.